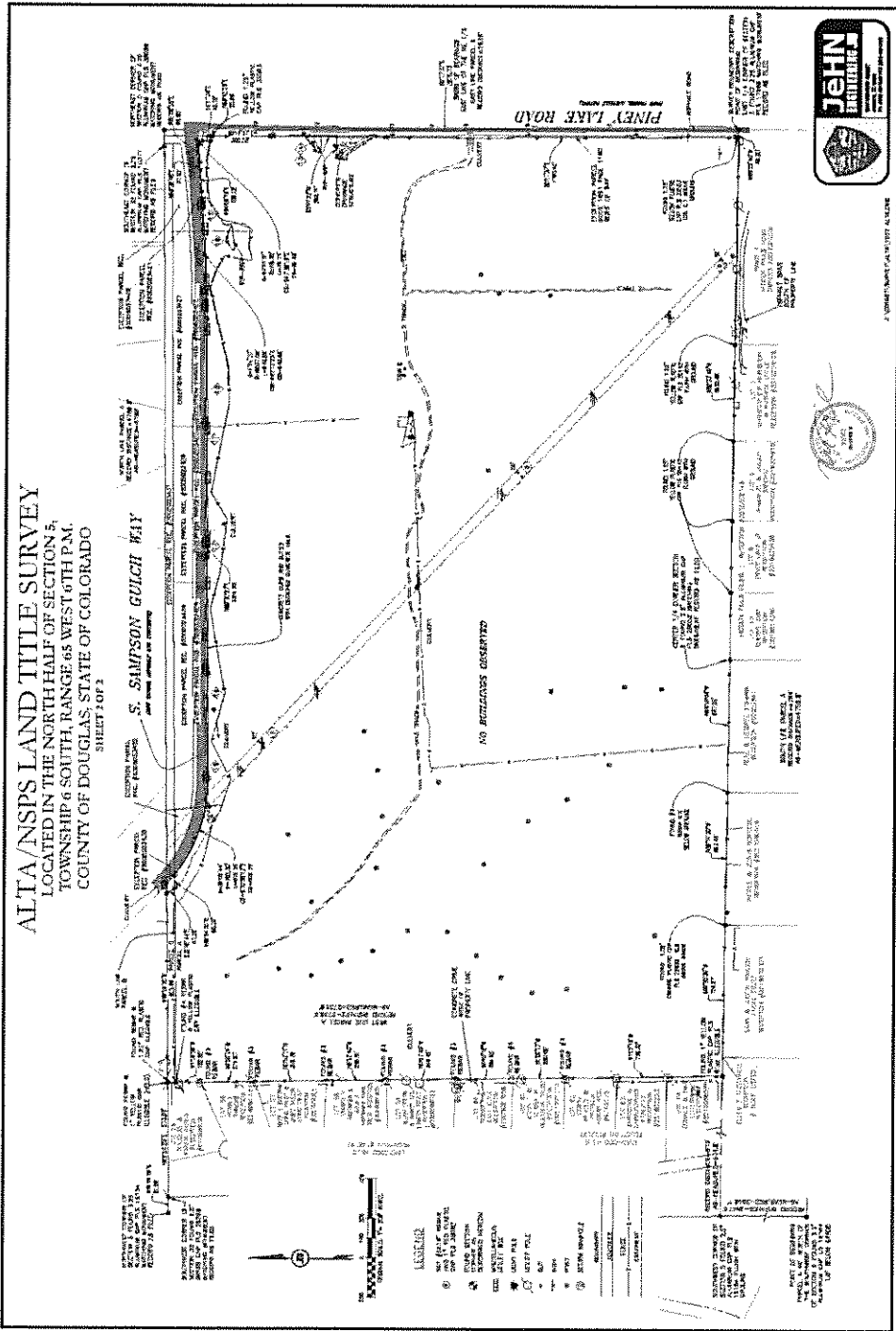


Trails Metropolitan District

DN 3586133.1

Shaded area is within the District's boundaries.



Service Plan for Trails Metropolitan District

RECEIVED

MAY 04 2020

Div of Local Government



Trails Metropolitan District

**RECEIVED**

MAY 04 2020

Div of Local Government

**Exhibit B  
Legal Description**

A PARCEL OF LAND LOCATED IN THE NORTH HALF OF SECTION 5, TOWNSHIP 6 SOUTH, RANGE 65 WEST OF THE 6TH PRINCIPAL MERIDIAN, COUNTY OF DOUGLAS, STATE OF COLORADO AND BEING MORE PARTICULARLY DESCRIBED AS FOLLOWS:

**BASIS OF BEARINGS:**

BEARINGS ARE BASED ON THE EAST LINE OF THE NORTHEAST QUARTER OF SAID SECTION 5, ASSUMED TO BEAR SOUTH 00°17'37" EAST, A DISTANCE OF 2875.73 FEET BETWEEN THE FOLLOWING DESCRIBED MONUMENTS:

- NORTHEAST CORNER OF SECTION 5 FOUND 3.25 ALUMINUM CAP PLS 38098 MATCHING MONUMENT RECORD AS FILED.

- EAST QUARTER CORNER OF SECTION 5 FOUND 3.25 ALUMINUM CAP PLS 17666 MATCHING MONUMENT RECORD AS FILED.

COMMENCING AT SAID EAST QUARTER CORNER;

THENCE NORTH 89°23'40" WEST, A DISTANCE OF 40.00 FEET TO THE NORTHEAST CORNER OF HIDDEN PINES FILING 1, RECEPTION NO. 2015070148 AND THE POINT OF BEGINNING;

THENCE NORTH 89°23'40" WEST, ALONG THE NORTHERLY LINE OF SAID HIDDEN PINES FILING 1, A DISTANCE OF 2,622.69 FEET TO THE CENTER QUARTER CORNER OF SAID SECTION 5;

THENCE NORTH 89°15'04" WEST, ALONG THE NORTH LINE OF RECEPTION NUMBER 02057841, A DISTANCE OF 667.03 FEET TO A NUMBER 3 REBAR;

THENCE NORTH 89°14'20" WEST, ALONG THE NORTH LINE OF RECEPTION NUMBER 2017080419, A DISTANCE OF 667.44 FEET TO A NUMBER 3 REBAR;

THENCE NORTH 89°20'35" WEST, A DISTANCE OF 759.67 FEET TO THE SOUTHEAST CORNER OF LIVENGOOD HILLS, RECEPTION NO. 122187 AS MONUMENTED WITH A REBAR AND ILLEGIBLE 1" YELLOW PLASTIC CAP;

THENCE ALONG THE EASTERLY LINE OF SAID LIVENGOOD HILLS THE FOLLOWING EIGHT (8) COURSES AND DISTANCES;

1. NORTH 01°02'19" WEST, A DISTANCE OF 786.32 FEET TO A NUMBER 3 REBAR;
2. NORTH 01°00'17" WEST, A DISTANCE OF 260.0 FEET TO A NUMBER 3 REBAR;
3. NORTH 00°45'18" WEST, A DISTANCE OF 284.85 FEET TO A NUMBER 3 REBAR;
4. NORTH 00°57'03" WEST, A DISTANCE OF 349.45 FEET TO A NUMBER 3 REBAR;
5. NORTH 00°52'40" WEST, A DISTANCE OF 298.91 FEET TO A NUMBER 3 REBAR;
6. NORTH 00°53'11" WEST, A DISTANCE OF 359.79 FEET TO A NUMBER 3 REBAR;

Service Plan for Trails Metropolitan District

DN 3586133.1

7. NORTH 00°50'34" WEST, A DISTANCE OF 274.87 FEET TO A NUMBER 3 REBAR;

8. NORTH 01°29'58" WEST, A DISTANCE OF 162.62 FEET TO A REBAR AND ILLEGIBLE 1" YELLOW PLASTIC CAP;  
 THENCE NORTH 89°24'25" EAST, A DISTANCE OF 953.09 FEET TO THE SOUTHERLY RIGHT-OF-WAY OF SOUTH SAMPSON GULCH WAY;  
 THENCE ALONG SAID SOUTHERLY RIGHT-OF-WAY THE FOLLOWING NINE (9) COURSES AND DISTANCES;

1. THENCE SOUTH 32°45'44" EAST, A DISTANCE OF 47.25 FEET;
2. THENCE NORTH 89°24'25" EAST, A DISTANCE OF 68.30 FEET;
3. THENCE ALONG A NON-TANGENT CURVE TO THE LEFT, HAVING A RADIUS OF 762.00 FEET, A CENTRAL ANGLE OF 39°02'44", WHOSE CHORD BEARS SOUTH 70°58'12" EAST A DISTANCE OF 509.29 FEET, FOR AN ARC DISTANCE OF 519.28 FEET;
4. THENCE NORTH 89°30'27" EAST, A DISTANCE OF 2,314.30 FEET;
5. THENCE ALONG A NON-TANGENT CURVE TO THE LEFT, HAVING A RADIUS OF 8,037.00 FEET, A CENTRAL ANGLE OF 04°34'07", WHOSE CHORD BEARS NORTH 87°13'23" EAST A DISTANCE OF 640.68 FEET, FOR AN ARC DISTANCE OF 640.85 FEET;
6. THENCE NORTH 84°56'19" EAST, A DISTANCE OF 106.12 FEET;
7. THENCE NORTH 89°30'46" EAST, A DISTANCE OF 37.62 FEET;
8. THENCE NORTH 85°00'55" EAST, A DISTANCE OF 88.65 FEET;
9. THENCE ALONG A CURVE TO THE RIGHT HAVING A RADIUS OF 18.00 FEET, A CENTRAL ANGLE OF 94°41'31", WHOSE CHORD BEARS SOUTH 47°38'19" EAST A DISTANCE OF 26.48 FEET, FOR AN ARC DISTANCE OF 29.75 FEET TO THE WESTERLY RIGHT-OF-WAY OF NORTH PINEY LAKE ROAD;  
 THENCE ALONG SAID RIGHT-OF-WAY THE FOLLOWING FIVE (5) COURSES AND DISTANCES;

1. THENCE SOUTH 00°17'34" EAST, A DISTANCE OF 42.22 FEET;
2. THENCE NORTH 89°42'26" EAST, A DISTANCE OF 25.86 FEET;
3. THENCE SOUTH 00°17'37" EAST, A DISTANCE OF 300.53 FEET;
4. THENCE SOUTH 00°41'23" WEST, A DISTANCE OF 582.71 FEET;
5. THENCE SOUTH 00°17'37" EAST, A DISTANCE OF 1,759.86 FEET TO THE POINT OF BEGINNING.

CONTAINING 12,640,269 SQUARE FEET OR 290.180 ACRES, MORE OR LESS

NOTE: SURVEY BOUNDARY DESCRIPTION IS BEING PROVIDED TO COMBINE BOTH PARCELS INTO ONE DESCRIPTION AND TO REMOVE THE EXCEPTION PARCELS IN PREPARATION OF A SUBDIVISION PLAT.